

# Instruction Manual

CarPlay Integration for Mercedes-Benz NTG 5.0/5.1

<b>Model No.</b>	CV-NTG5-CPAA
<b>MCU-SW Ver.</b>	100707
<b>CP-SW Ver.</b>	C7.5
<b>Manual Ver.</b>	1.6
<b>Date</b>	03-2020

**CARVISION®**

## ⚠ Warning:

- In order to protect the driving safety and avoid break the traffic law; please DO NOT operate the interface while driving.
- The reversing surveillance function just is used in reversing assistance. Please check the entire surroundings while reversing.
- All steps of installation should be done by the well-trained specialist.
- During installation, the ignition key should be taken off and after all installation finished, connect power cable last.
- Please DO NOT plug or pull the connected cables in the state of power-on, in order to avoid damaged monitor or accessory.
- Install wiring in a manner in which cables will not come in contact with metal parts. The wiring may be damaged by contact with metal parts, resulting in fire and shocks. Avoid all contact with hot surfaces when wiring the main unit. High temperatures may damage wiring, causing shorts, arcing and fires.
- Please DO NOT put the product in the damp environment or water, in order to avoid electric shock, damaged and fire accident caused by a short circuit.
- Kindly check all components are in the box when receiving the product. If anything missing, inform to the supplier/manufacturer.
- Start the engine before loading, check the interface whether have function displayed, key control whether correct, the vehicle

interface whether having a scratch. Please give the feedback to the supplier/manufacturer if there have any questions.

- Please note that put the disassembled automotive components in a good way on the installation process, avoid scratching the instrument panel, the leftovers of connecting cables need to handle and DO NOT leave it in the car. The connecting plug must be insulated in order to short circuit.
- The cables should be connected in a good way, the vehicle installation space is a little small, so reduce space usage as far as possible. There should be a good plan about connect cables, avoid affecting the active component of connecting, such as control components of turning the steering wheel, throttle and brake pedal. There need to be fastened after connecting cables in case of a drop.

## Compatibility:

Brands	Class	Years	Original System
Mercedes-Benz	A Class (W176)	2015 -	<p>NTG 5.0/5.1 system with 7.4/8.4 inch monitor</p> <p><b>4 Pin LVDS</b> connector</p> 
	B Class (W246)		
	C Class (W205)		
	E Class (W212)		
	V Class (W447)		
	CLA (C117)		
	CLS (W219)		
	GLC (X253)		
	GLE (W166)		
	GLS (X166)		

## Content:

● Warning	3
● Compatibility	5
● Features	6
● Package Components	7
● Connection Diagram	8
● DIP Setting	10
● Operation Instruction	11
■ How to switch from original to add-on interface	11
■ Apple CarPlay	12
■ Android Auto	13
■ Mirroring	14
■ USB Multimedia Playback	14

## Features:

- Integrated 3 in 1 module supports Apple CarPlay, Android Auto, and screen mirroring functions
- Supports USB HD video and lossless music playback (APE, WAV, FLAC, MP3, WMA, etc.)
- Offers 2 CVBS video-in for front/rear view camera
- Support PDC (Parking Distance Control) and FPG (Flexible Parking Guidelines)
- Supply 12V power to the backup camera
- 2 alternative ways display front view (DIP setting): display automatically when shifted from “R” gear or long press “**BACK**” button
- VGA input for specific 360 panoramic system, offers a clearer picture
- Operate by OEM Comand controller & steering wheel buttons
- Support further software update by TF card



Apple CarPlay



Android Auto



Mirroring



USB multimedia



FPG



PDC



2\*CVBS in



Software update

## Package Components:



**Main Unit**

Dimension: 143\*102\*26 mm



**Quadlock Main Power Cable**



**4 pin LVDS Cable**



**USB/MIC Cable**



**AUX-USB adapter**

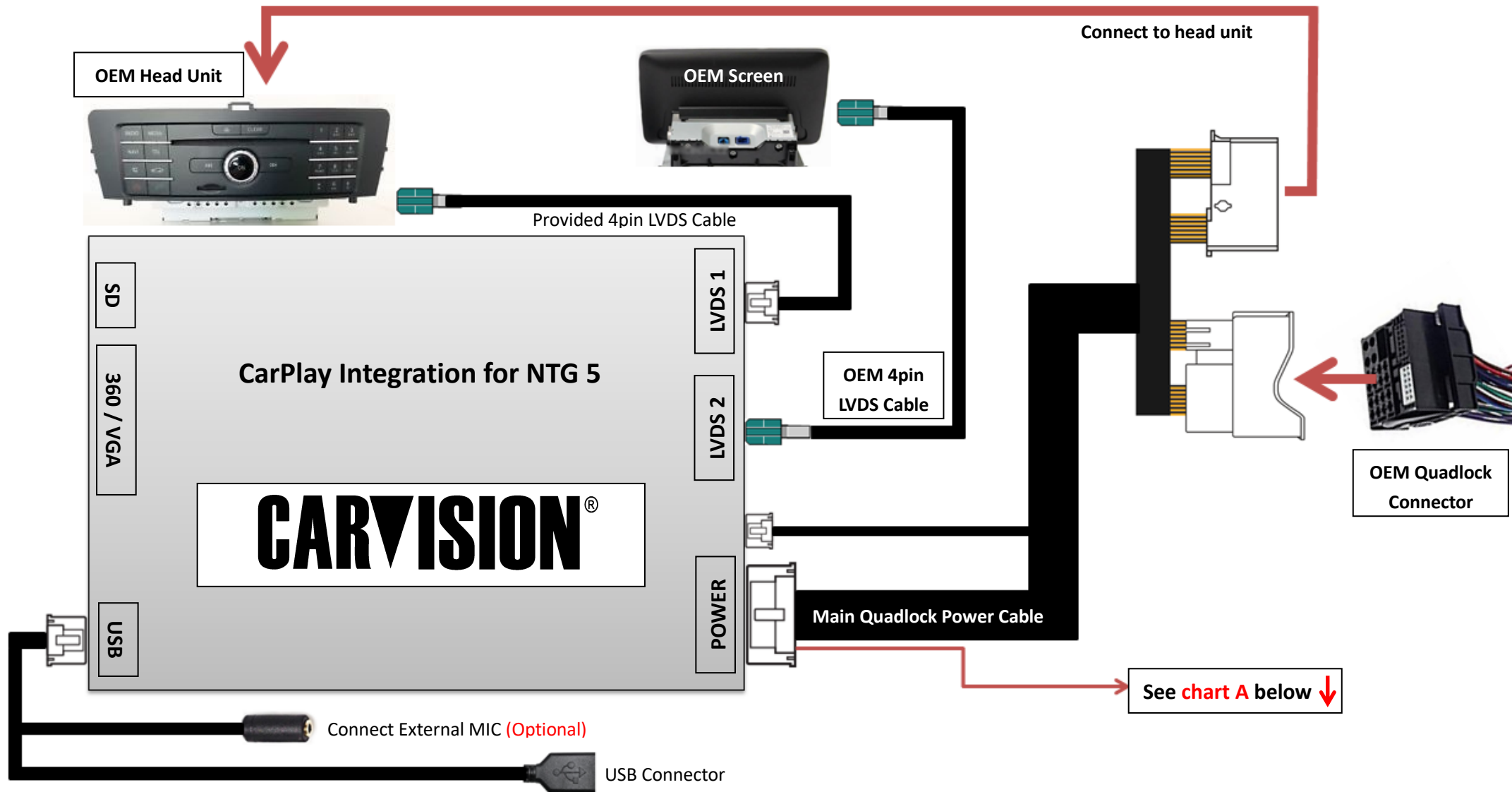


**3.5mm AUX cable**

### Optional Component:

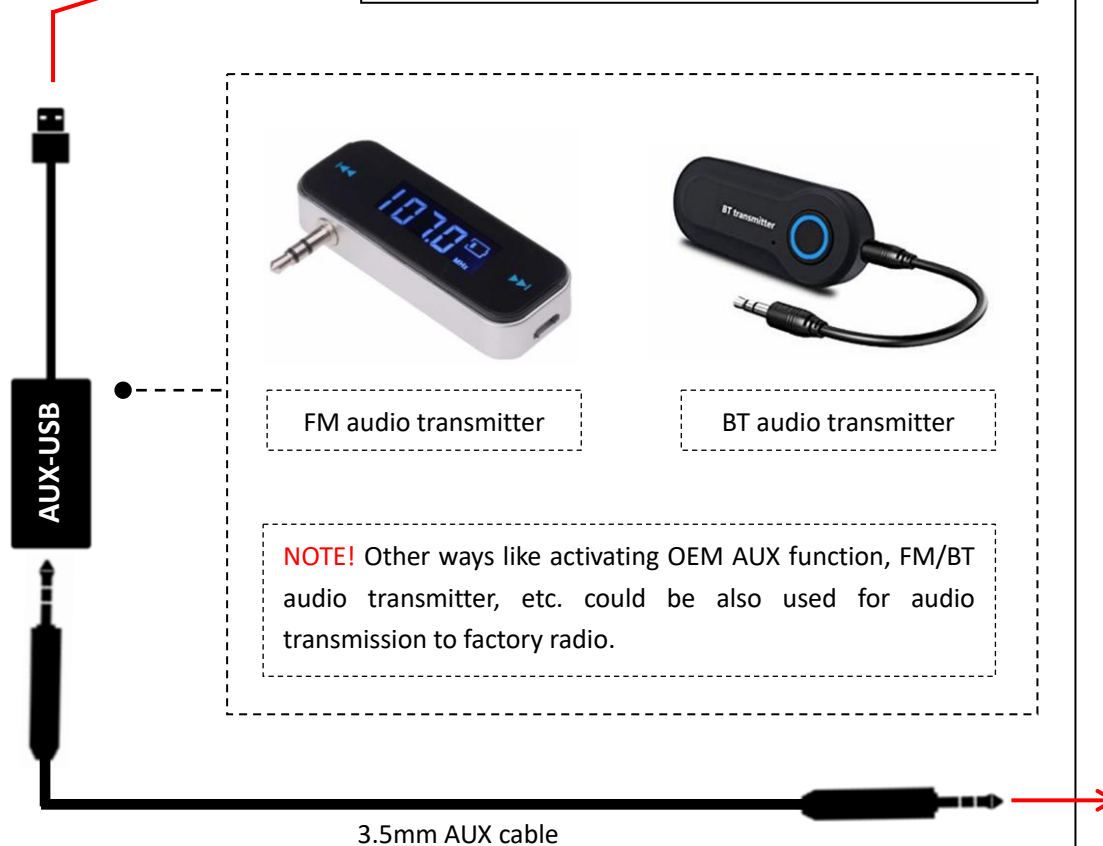


**External Microphone**  
(Needed when a car **without**  
**OEM MIC**)





## How to delivering audio to OEM radio



## Chart A: ↓

	ACC_OUT	Supply power for DVR or other video devices. Just connect the <b>ACC_OUT (RED)</b> when use aftermarket front view camera
	B+	
	GND	Connect <b>GND</b> if there is any audio noise
	GND 2	
	LEFT_DET	N/A
	RIGHT_DET	N/A
	CAM_POWER	Supply 12V power for backup camera
	REVERSE	Reverse detect (Connect to reverse light if <b>CAM_POWER</b> cable does not output 12V)
	REAR_CVBS	Rear view camera video input
	FRONT_CVBS	Front view camera/DVR video input
	AUDIO OUT	AUX audio output (Connect to <b>AUX-USB</b> adapter or other audio transmitters for audio delivering to OEM radio)

## DIP Setting:



ON ↓



OFF ↑

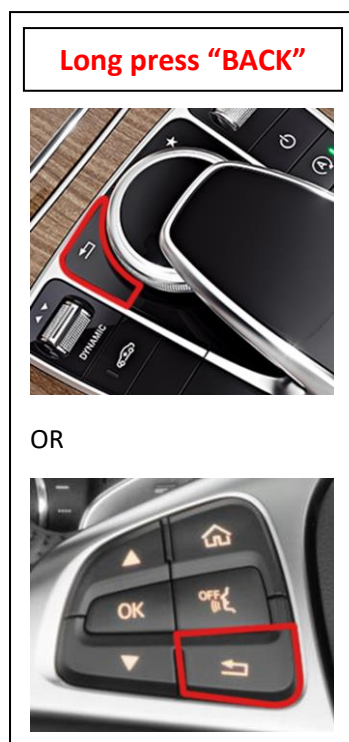


1	Set this to ON ↓ if OEM joystick unavailable on CLA/B class	Default
2	<b>Disable</b> 360 Panoramic	Enable 360 Panoramic
3	CVBS	VGA (360 mode)
4	Display front view camera for 10S automatically after shifted from "R" gear	<b>Skip</b> front view camera (Long press "BACK" button to display front view/DVR)
5	800*480 (7.4"/8.4")	960*480 (8.4"); <b>2019 X Class</b>
6	2015- A/B/CLA/GLA/CLS/GLS/GLE/E Class	2015- C/V/GLC Class; <b>2019 X Class</b>
7	<b>Original</b> Rear View Camera	<b>Aftermarket</b> Rear View Camera
8	<b>External</b> Microphone	<b>Original</b> Microphone

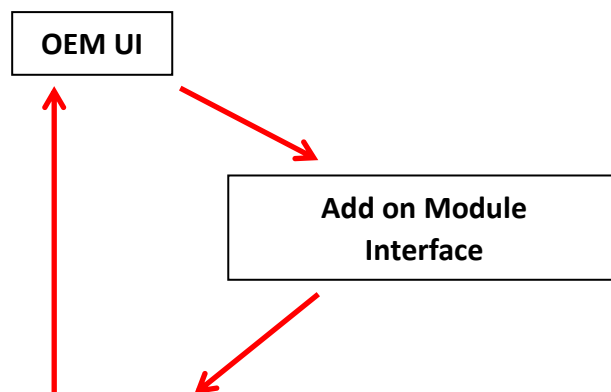
**NOTE!** Please reboot the interface for effective after changing any DIP setting.

## Operation Instruction:

- How to switch from Original to Add-on interface



Order: OEM - Add on - DVR - OEM

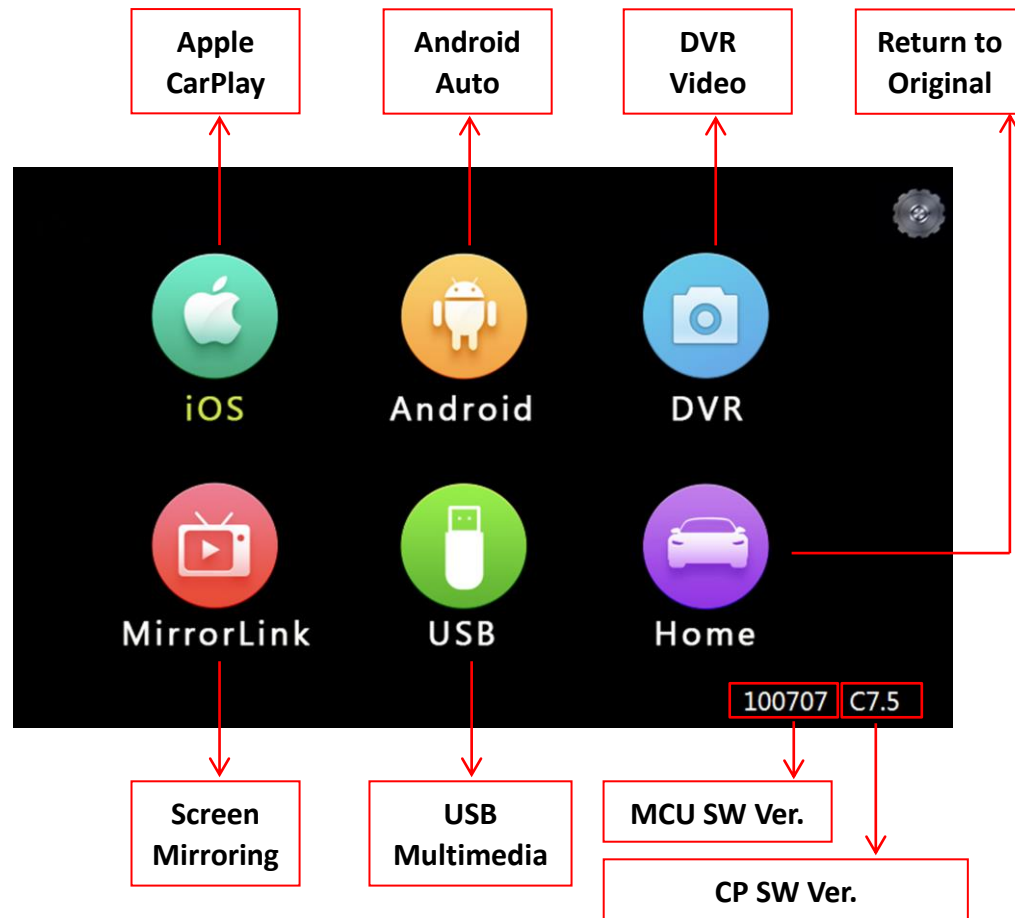


DVR Video in (DIP No. 4 must be OFF ↑)

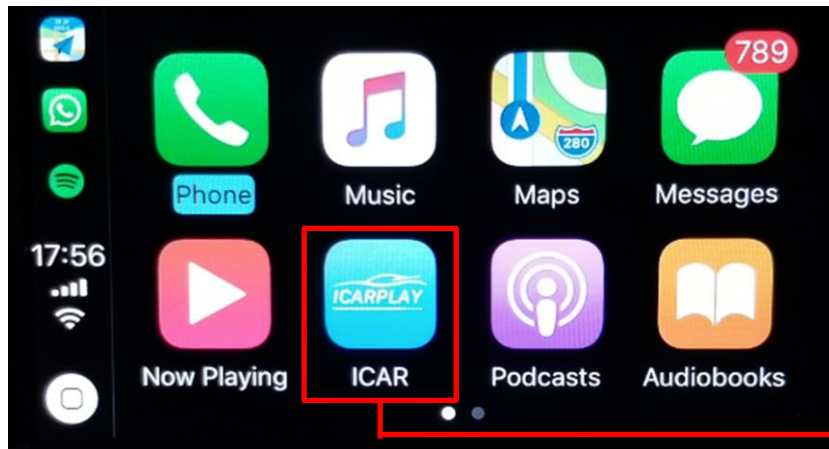
**NOTE!** It will skip DVR picture if not CVBS video signal input or DIP No.4 is "ON↓" status or switch by "BACK" button on steering wheel.

It will switch to add on module UI automatically when a phone/USB stick connected.

Add on module UI:



## • Apple CarPlay



Return to add-on  
module UI

**NOTE! Disconnect** the Bluetooth connection between the phone and car stereo when using Apple CarPlay.



**1** : Click as return to the previous step; long press for switch mode:  
OEM-Add on-DVR-OEM

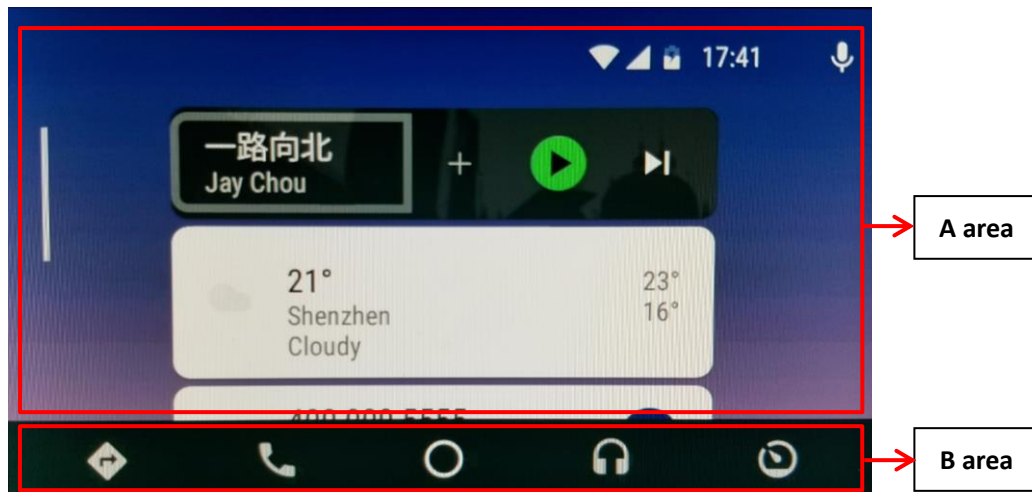
**2** : Turn the dial to move menu pointer

**3** : Answer/Hang up phone call

**4** : Long press 3S to activate Siri

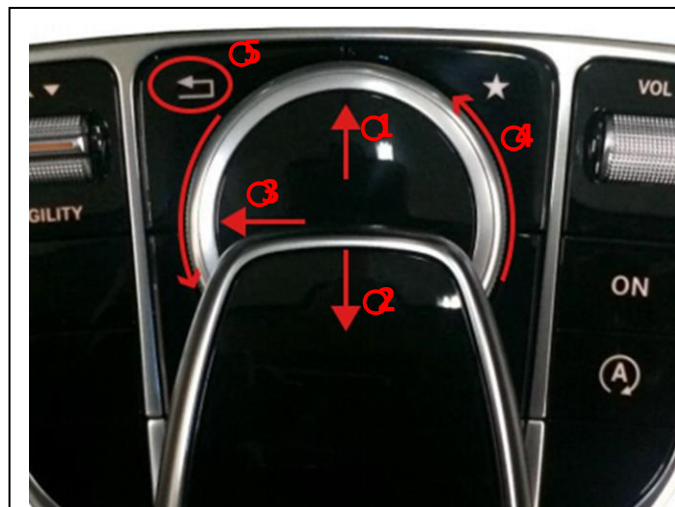
**5** : Long press 10S to reboot add on CarPlay module

## ● Android Auto



### NOTE!

- Make sure smartphone connect to original car stereo Bluetooth for phone call audio delivering when using Android Auto.
- NOT available for activating **Google Assistant** with factory buttons, please use voice command "**OK Google**" instead.

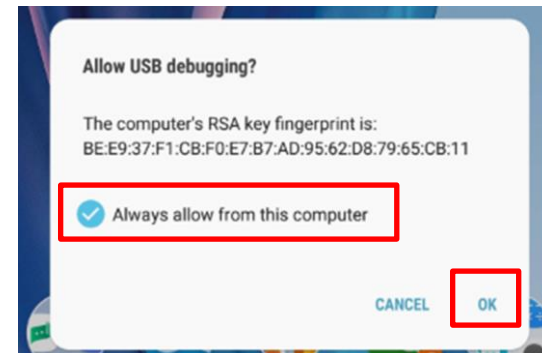
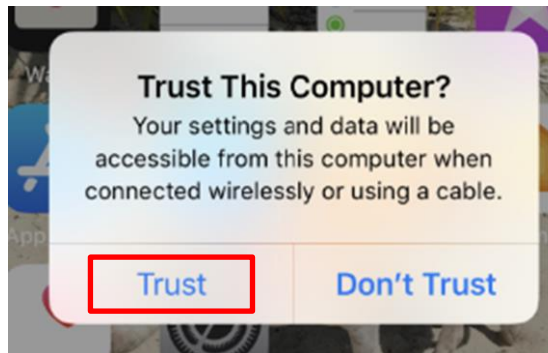


- Ⓐ : Menu-pointer switch to **A area**
- Ⓑ : Menu-pointer switch to **B area**
- Ⓒ : Bring up the menu of upper left
- Ⓓ : Turn the dial to move menu-pointer
- Ⓔ : Click as return to the previous step; long press for switch mode: OEM-Add on-DVR-OEM

## ● Mirroring



Connect Android smartphone/iPhone with USB cable, and then enter “MirrorLink” for screen mirroring.



### NOTE!

- Please always **trust or allow** when display a popup notification
- Enabling “USB Debugging” on an Android device
- Android device must connect to car stereo BT for all audio delivering

## ● USB Multimedia Playback



Connect a USB memory stick, enter “USB” icon for playing multimedia: Music, Picture, and Video.



Copyright © **CarVision** All rights reserved.

**info@carvision.nl**