

Instruction Manual

CarPlay Integration for Audi MIB 2 system



Content:

● Warning	3
● Compatibility	5
● Features	6
● Package Components	7
● Connection Diagram	8
● DIP Setting	10
● Operation Instruction	11
■ How to switch from original to add-on interface	11
■ Apple CarPlay	12
■ Android Auto	13
■ Mirroring	14
■ USB Multimedia Playback	14


⚠ Warning:

- In order to protect the driving safety and avoid break the traffic law; please DO NOT operate the interface while driving.
- The reversing surveillance function just is used in reversing assistance. Please check the entire surroundings while reversing.
- All steps of installation should be done by the well-trained specialist.
- During installation, the ignition key should be taken off and after all installation finished, connect power cable last.
- Please DO NOT plug or pull the connected cables in the state of power-on, in order to avoid damaged monitor or accessory.
- Install wiring in a manner in which cables will not come in contact with metal parts. The wiring may be damaged by contact with metal parts, resulting in fire and shocks. Avoid all contact with hot surfaces when wiring the main unit. High temperatures may damage wiring, causing shorts, arcing and fires.
- Please DO NOT put the product in the damp environment or water, in order to avoid electric shock, damaged and fire accident caused by a short circuit.
- Kindly check all components are in the box when receiving the product. If anything missing, inform to the supplier/manufacturer.
- Start the engine before loading, check the interface whether have function displayed, key control whether correct, the vehicle

interface whether having a scratch. Please give the feedback to the supplier/manufacturer if there have any questions.

- Please note that put the disassembled automotive components in a good way on the installation process, avoid scratching the instrument panel, the leftovers of connecting cables need to handle and DO NOT leave it in the car. The connecting plug must be insulated in order to short circuit.
- The cables should be connected in a good way; the vehicle installation space is a little small, so reduce space usage as far as possible. There should be a good plan about connect cables, avoid affecting the active component of connecting, such as control components of turning the steering wheel, throttle and brake pedal. There need to be fastened after connecting cables in case of a drop.

Compatibility:

Brands	Model	Years	Original System
Audi	A3	2017 -	<p>MIB II main unit with 7/8.3 inch monitor</p> <p>4 Pin LVDS connector</p> 
	A4		
	A5/S5		
	Q2		
	Q5		
	Q7		



Features:

- Integrated 3 in 1 module supports Apple CarPlay, Android Auto, and screen mirroring functions
- Supports USB HD video and lossless music playback (APE, WAV, FLAC, MP3, WMA, etc.)
- Offers 2 CVBS video in for front/rear view camera
- Support PDC (Parking Distance Control) and FPG (Flexible Parking Guidelines)
- Supply 12V power to the backup camera
- Display front view camera automatically when shifted from “R” gear (DIP setting)
- VGA input for specific 360 panoramic system, offers a clearer picture
- Operate by OEM knob controller & steering wheel buttons
- Support further software update by TF card



Apple CarPlay



Android Auto



Mirroring



USB multimedia



FPG



PDC



2*CVBS in



Software update

Package Components:



Main Unit

Dimension: 143*102*26 mm



Quadlock Main Power Cable



4 pin LVDS Cable



USB/MIC Cable

Optional Component:



External Microphone
(Needed when a car **without**
OEM MIC)

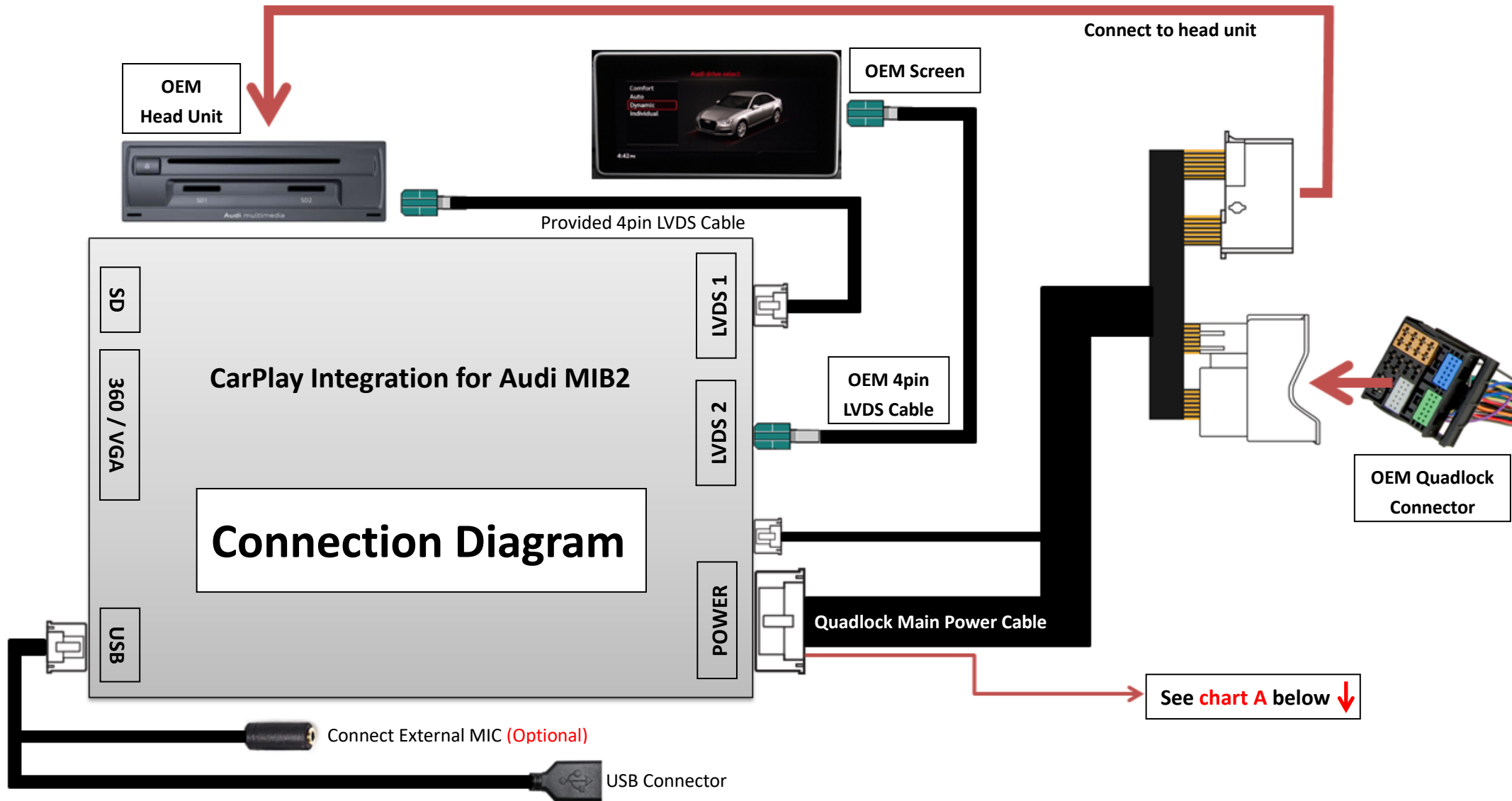


Chart A: ↓

 ACC_OUT

 B+

 GND

 A_GND

 LEFT_DET

 RIGHT_DET

 CAM_POWER

 REVERSE

 REAR_CVBS

 FRONT_CVBS

 AUDIO OUT

Supply power for DVR or other video devices. Just connect the **ACC_OUT (RED)** when use aftermarket front view camera

Connect **GND** if there is any audio noise

N/A

N/A

Supply 12V power for backup camera

Reverse detect (Connect to reverse light if **CAM_POWER** cable does not output 12V)

Rear view camera video input

Front view camera/DVR video input

AUX audio output (Connect to external audio adapter kits for sound delivering to car radio if there is not OEM AUX function)

DIP Setting:



ON ↓



OFF ↑



1	Disable Dynamic Parking Guideline	Enable Dynamic Parking Guideline
2	Disable 360 Panoramic	Enable 360 Panoramic
3	CVBS	VGA (360 mode)
4	Display front view camera for 10S automatically after shifted from “R” gear	Skip front view camera (Enter “ DVR ” icon to view picture)
5	800*480 (7 inch)	1280*480 (8.3 inch)
6	2017- A4/A5/S5/Q5/Q7	2017- A3/Q2
7	Original Rear View Camera	Aftermarket Rear View Camera
8	External Microphone	Original Microphone

NOTE! Please reboot the interface for effective after changing any DIP setting.

Operation Instruction:

● How to switch from Original to Add-on interface

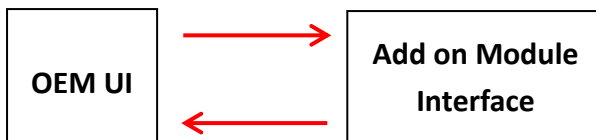
Long press "MODE"



or "BACK"

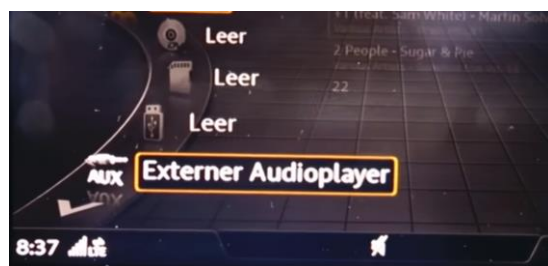


Order: OEM - Add on - OEM



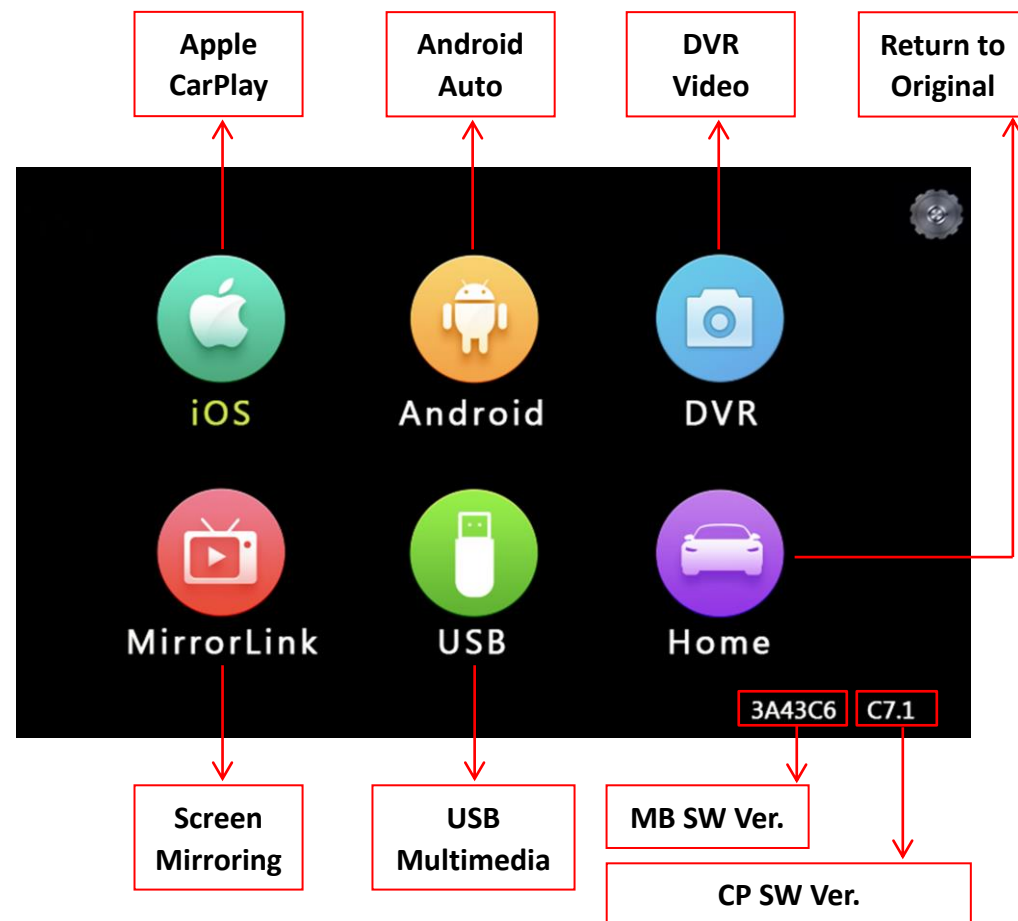
It will switch to add on module UI automatically when a phone/USB stick connected.

How to delivering audio to OEM radio

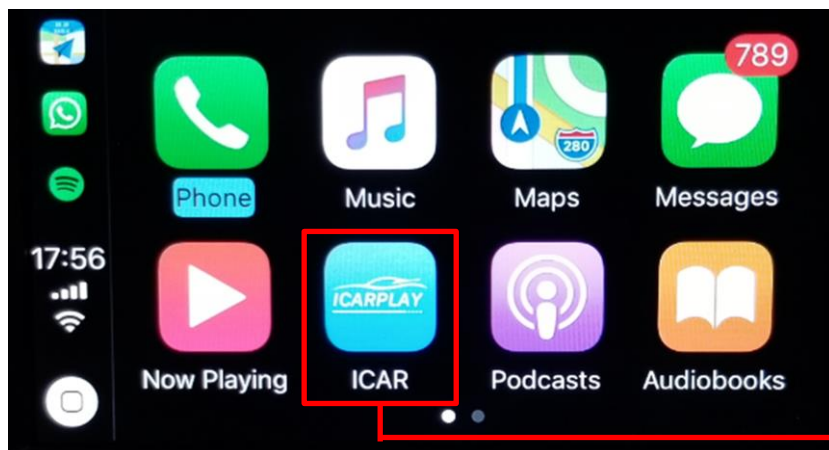


NOTE! Make sure switch to "AUX" mode on original car stereo for audio transmission before using the CarPlay integration.

Add on module UI:

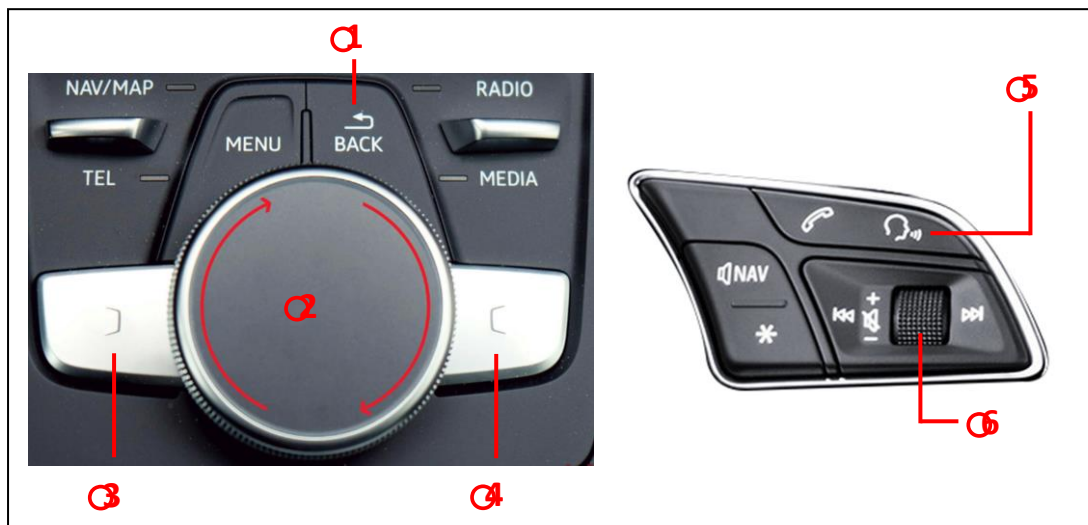


• Apple CarPlay



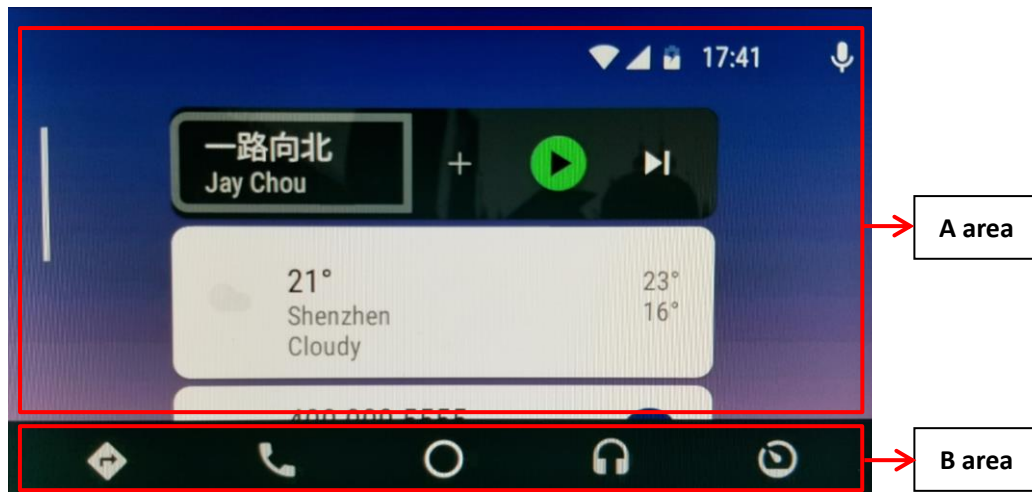
Return to add-on
module UI

NOTE! Disconnect the Bluetooth connection between the phone and car stereo when using Apple CarPlay.



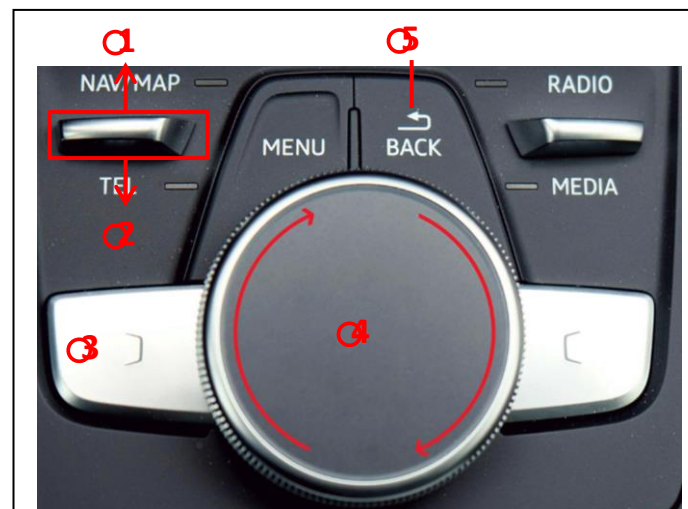
- 1 : Click as return to the previous step; long press for switch mode: OEM-Add on-OEM
- 2 : Turn the dial to move menu pointer; press for confirm
- 3 : Previous song when playing music
- 4 : Next song when playing music
- 5 : Long press 3S to activate Siri
- 6 : Long press 10S to reboot add on CarPlay module

● Android Auto



NOTE!

- Make sure smartphone connect to original car stereo Bluetooth for phone call audio delivering when using Android Auto.
- NOT available for activating **Google Assistant** with factory buttons, please use voice command "**OK Google**" instead.

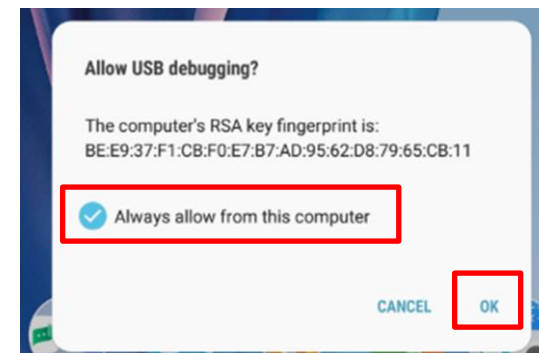
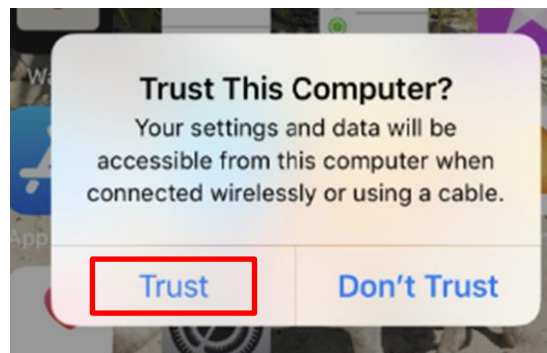


- 1 : Menu-pointer switch to **A area**
- 2 : Menu-pointer switch to **B area**
- 3 : Bring up the menu of upper left
- 4 : Turn the dial to move menu-pointer; press for confirm
- 5 : Click as return to the previous step; long press for switch mode: OEM-Add on-OEM

● Mirroring



Connect Android smartphone/iPhone with USB cable, and then enter “MirrorLink” for screen mirroring.



NOTE!

- Please always **trust or allow** when display a popup notification
- Enabling “USB Debugging” on an Android device
- Android device must connect to car stereo BT for all audio delivering

● USB Multimedia Playback



Connect a USB memory stick, enter “USB” icon for playing multimedia: Music, Picture, and Video.



Copyright © CarVision all rights reserved