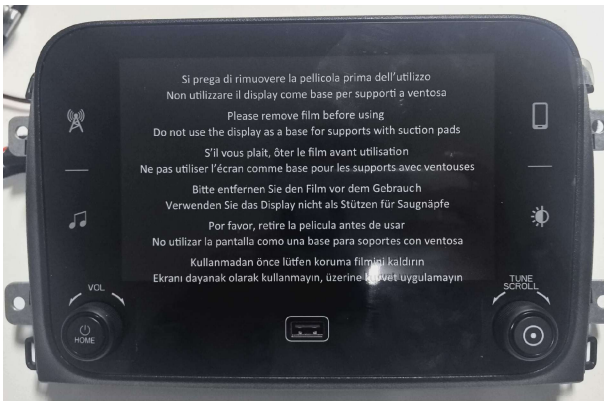
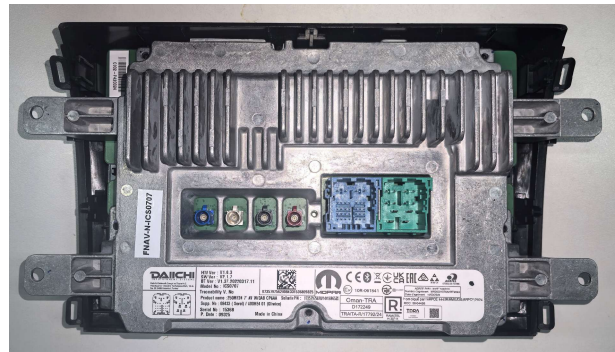


FIAT/PSA Daiichi ICS0707 Camera Video interface

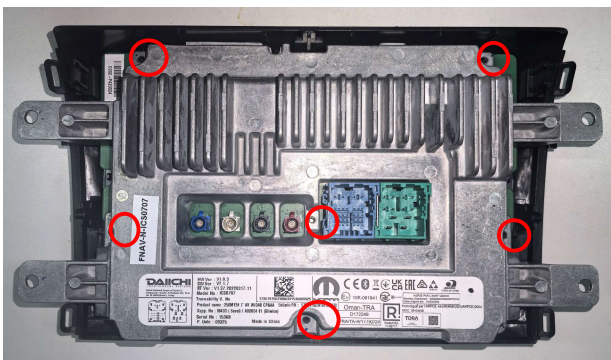
Art. 300411



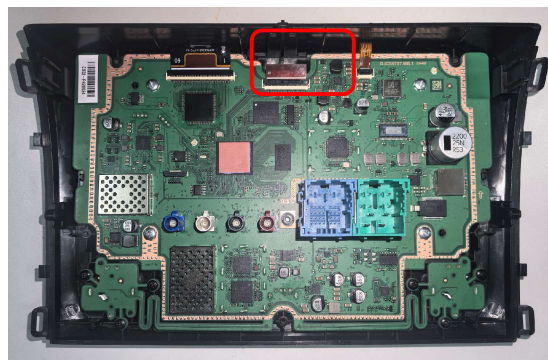
1. The Main unit front of Fiat_ICS0707



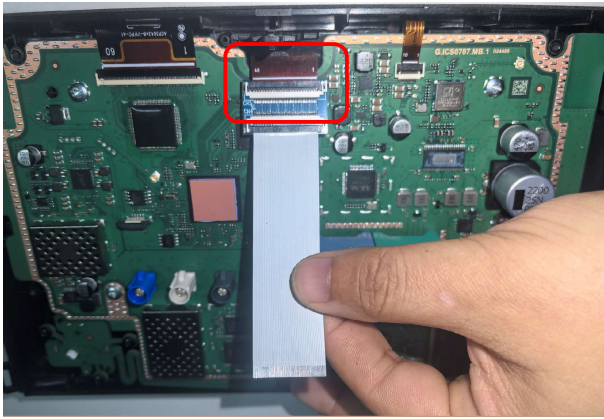
2. The Main unit back of the Fiat_ICS0707



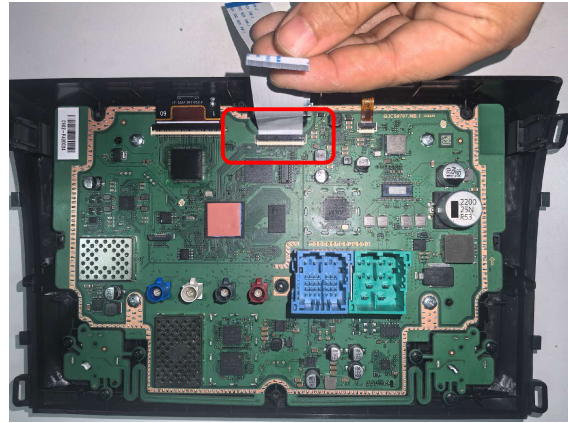
3. Remove the 6 fixing screws at the back of the screen and remove the metal back cover.



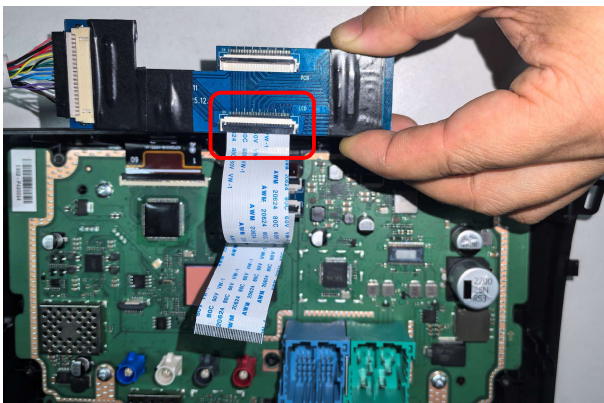
4. After removing the metal bracket, gently remove the original cable here.



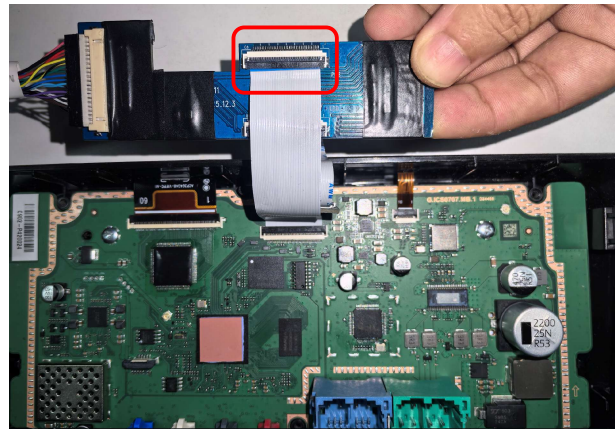
5. Insert the original ribbon cable and the ribbon cable into the connector.



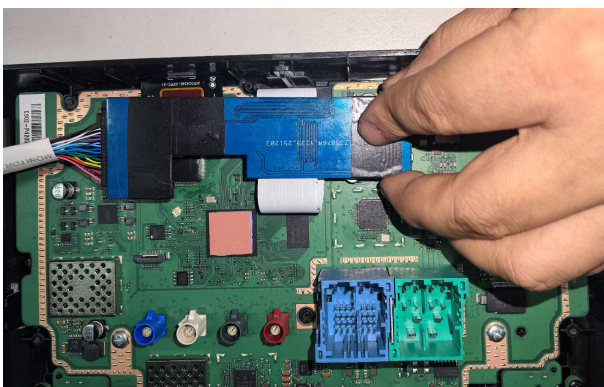
6. Insert interface ribbon cable into the connector on the other side.



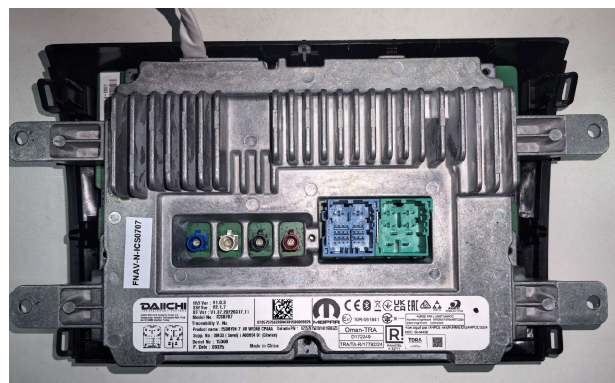
7. Insert the ribbon cable into the connector on the blue PCB board.



8. Insert ribbon cable into the connector on the blue PCB board.



9. Place the blue PCB board on the suitable position.



10. Put the metal back cover back and fix the 6 fixing screws.

Accessories:



| CAM-Fiat-ICS0707 | | | | | |
|------------------|------------------------|---|---|------------------|---|
| 1 | Interface box | 1 | 6 | Video-in cable | 1 |
| 2 | Power cable | 1 | 7 | Switch button | 1 |
| 3 | PCB board | 1 | 8 | Ribbon cable | 1 |
| 4 | Ribbon cable | 1 | 9 | Connection cable | 1 |
| 5 | Ribbon cable connector | 1 | | | |

Dip settings:

8 Dip-settings

| DIP UP=OFF | | DIP DOWN=ON | |
|------------|--|--------------|---------|
| DIP | ON | OFF | Default |
| 1 | AV1 ON | AV1 OFF | OFF |
| 2 | AV2 ON | AV2 OFF | OFF |
| 3 | AV3 ON Show V3 Front 10S after reverse (these is switchable in OSD menu) | AV3 OFF | OFF |
| 4 | Aftermarket REAR CAM | OEM rear cam | ON |
| 5 | No function | No function | OFF |
| 6 | No function | No function | OFF |
| 7 | No function | No function | OFF |
| 8 | No function | No function | OFF |



4 Dip-Settings:

| DIP UP=OFF | | DIP DOWN=ON | |
|------------|-------------|-------------|---------|
| DIP | ON | OFF | Default |
| 1 | must be OFF | | OFF |
| 2 | must be OFF | | OFF |
| 3 | must be OFF | | OFF |
| 4 | must be OFF | | OFF |

Trigger wires:

- **Trig-Rear***: insert +12/24V reverse light signal to activate the rear camera (V4). Signal must be stable, not LED.
- **Trig-Right**: insert +12/24V to activate CAM2 (V2).
- **Trig-Front**: insert +12/24V to activate the Front camera (V3).
Front camera also switches on automatically after reverse, and also by short-press switch button (included).
- **Trig-Left**: insert +12/24V to activate CAM1 (V1)

*Usually the reverse function is detected by CANbus and it's not needed to connect the Trig-REAR wire to reverse signal.

Additional power wires:

- ACC OUT: provides 12V while ignition is on (when CANbus is running)
- Manual ACC: connect to 12V ACC only when interface is disconnected from CANbus.

Switching from OEM picture to external sources manually:

- Video 1/2/4: User may use long-press external switch (included) to switch from OEM picture to external video sources (OEM → V1→V2→V4→OEM).
- Short-press on external switch to switch fast from OEM picture to Front cam picture.

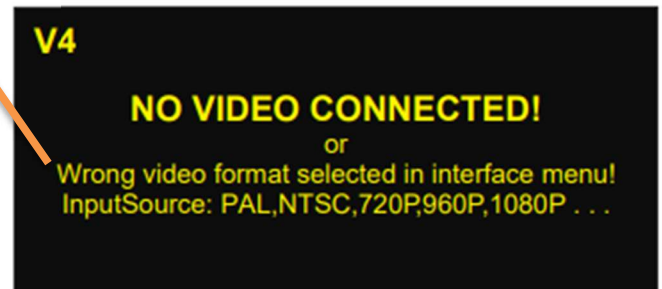
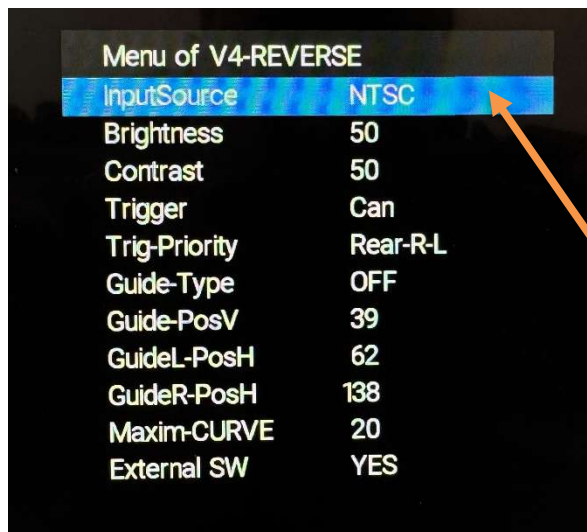


MENU settings:



- Activate a camera/video channel and press and hold the **MENU** button (3 sec.) to show the menu settings.
- Use **UP / DOWN** to change a setting
- Use **MENU** to jump to the next option

REAR CAM (V4) settings:



InputSource: select the right video system of the camera: [NTSC](#), [PAL](#), [720P PAL](#), [720P NTSC](#), [960P PAL](#), [960P NTSC](#), [1080P PAL](#), [1080P NTSC](#).

Brightness: adjust the brightness of the picture

Contrast: adjust the contrast of the picture

PosH: move the picture to left/right

PosV: move the picture to up/down

Trigger: **CAN:** interface switches over if CAN data matches, otherwise trigger wire needs to be connected.

Wire: use trigger wire to activate the camera/video channel

Trigger-Prio: select the priority of rear cam

Guide-Type: turn guidelines on/off. (see page 7)

Guidelines options: **Dynamic:** guidelines turn with the steering wheel (if CAN Data matches).

Fixed: static guidelines (always on screen, independent of CAN data).

Guide-PosV: adjust the height position of the guidelines

GuideL-PosH: adjust the horizontal position of the left guideline

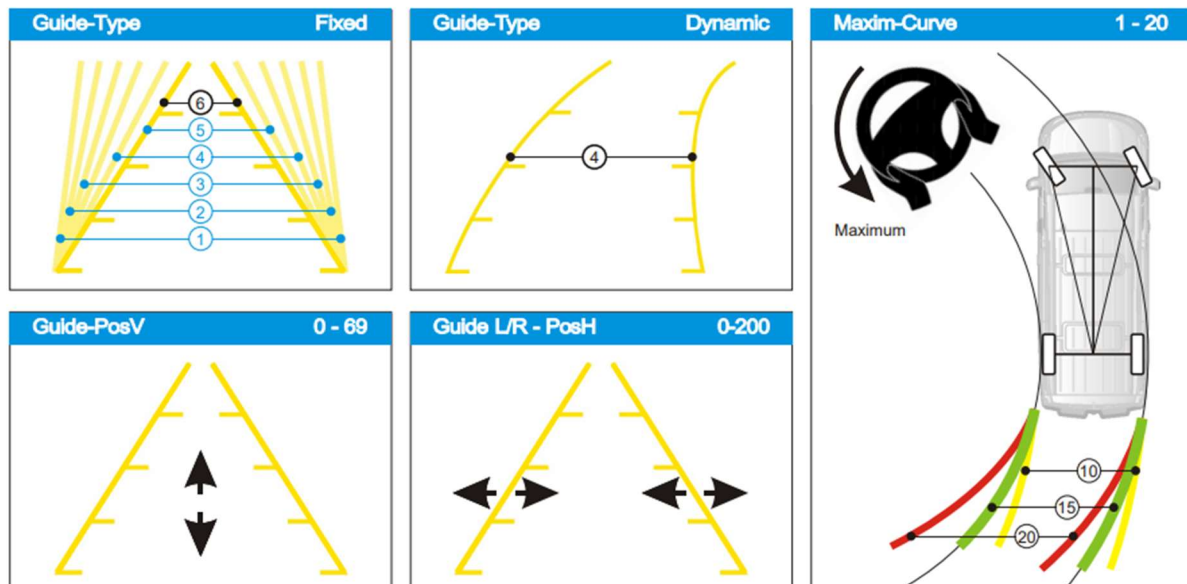
GuideR-PosH: adjust the horizontal position of the right guideline

Maxim-curve: adjust the maximum curve of the guidelines

External SW: activate the rear cam (V4) input by press+hold the external push button.

Dynamic guidelines: Choose between 6 types of dynamic patterns!

Fixed guidelines: Choose between 6 types of fixed patterns!



FRONT CAM (V3) settings:

| Menu of V3-FRONT | |
|------------------|---------------|
| Brightness | 50 |
| Contrast | 50 |
| PosH | 08 |
| PosV | 00 |
| Trigger | 10s after REV |
| InputSource | NTSC |

Trigger: select the desired time to show the Front cam picture automatically after reversing.

InputSource: select the right video system of the camera: [NTSC](#), [PAL](#), [720P PAL](#), [720P NTSC](#), [960P PAL](#), [960P NTSC](#), [1080P PAL](#), [1080P NTSC](#).

Left (V2) / Right (V1) settings:

| Menu of V2-RIGHT | |
|------------------|------|
| Brightness | 50 |
| Contrast | 50 |
| PosH | 08 |
| PosV | 00 |
| Trigger | Can |
| InputSource | NTSC |

Trigger: **CAN:** interface switches over if CAN data matches, otherwise trigger wire needs to be connected.

Wire: interfaces switches only over by using the trigger wire to activate the camera/video channel.

InputSource: select the right video system of the camera: [NTSC](#), [PAL](#), [720P PAL](#), [720P NTSC](#), [960P PAL](#), [960P NTSC](#), [1080P PAL](#), [1080P NTSC](#).