

CAM-HD-CRONY Installation Manual

Art.: 300408

This interface is suitable for Citroën (with the Clarion CRONY2) equipped with an all - in - one main unit and screen.



1.Content

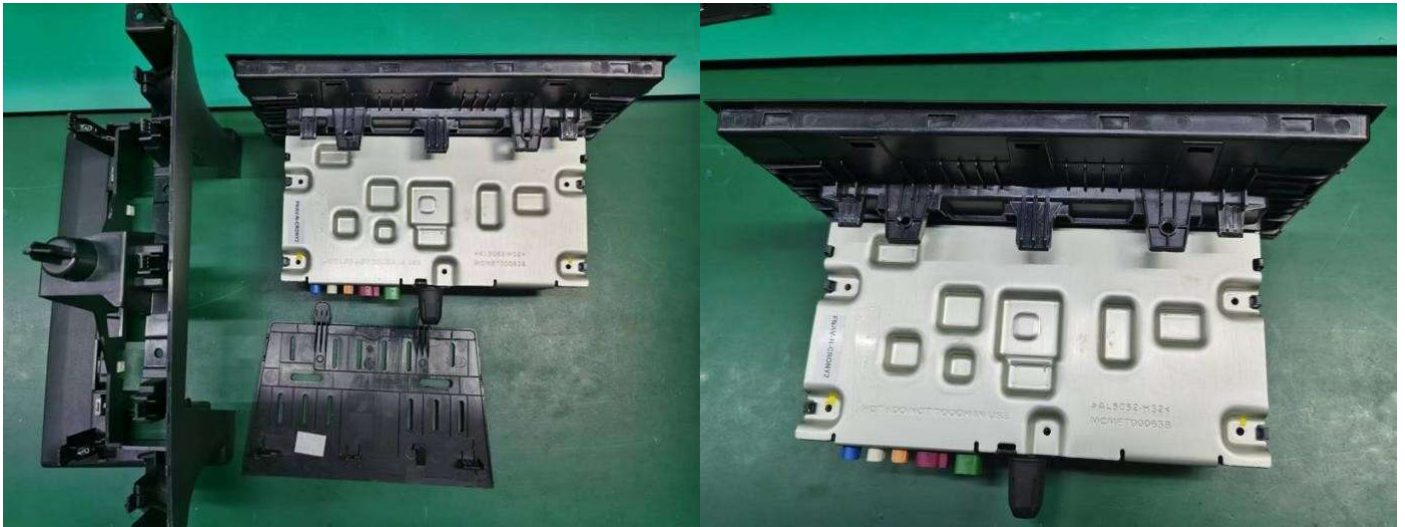


Content list					
No.	Name	Qty	No.	Name	Qty
1	Interface Box	1	4	4 Video RCA Cable +External Switch button	1 set
2	PCB Board+ LVDS cable	1	5	CAN-Harness cable	1
3	40PIN Ribbon cable (15cm) + nut(4pcs) + copper columns(4pcs) +screw (4pcs)	1 set			

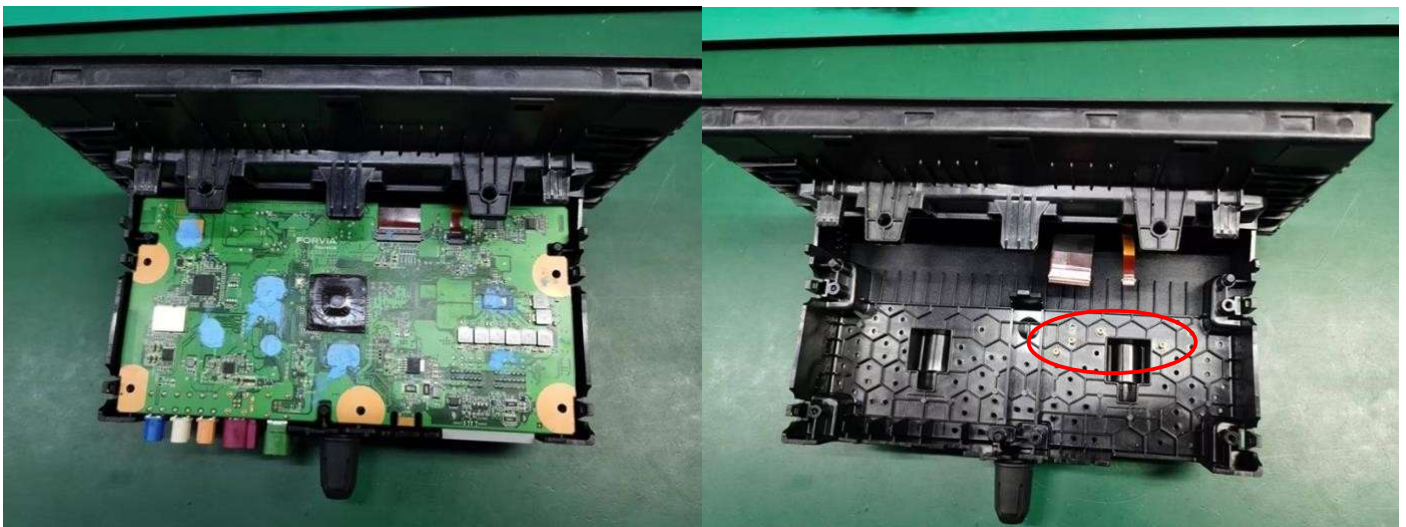
2. Connections



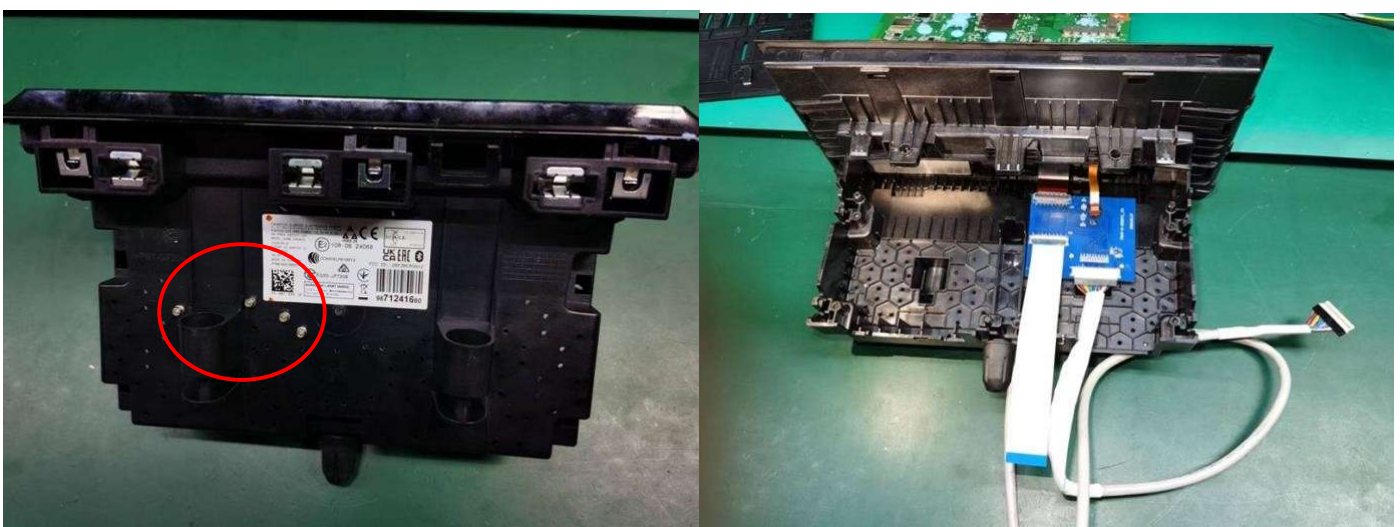
3. Installation:



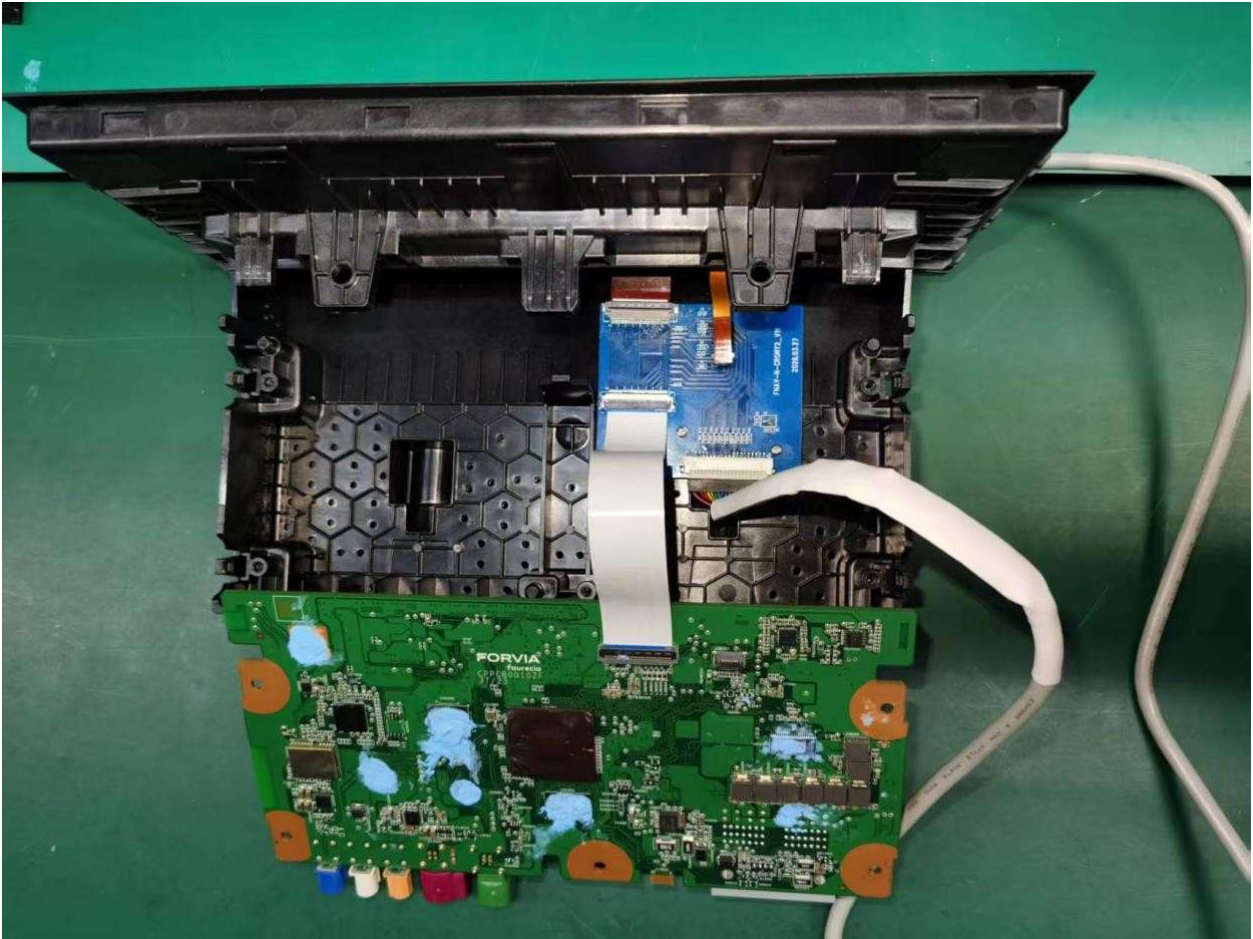
* Remove the two black plastic parts and metal cover from the OE unit.



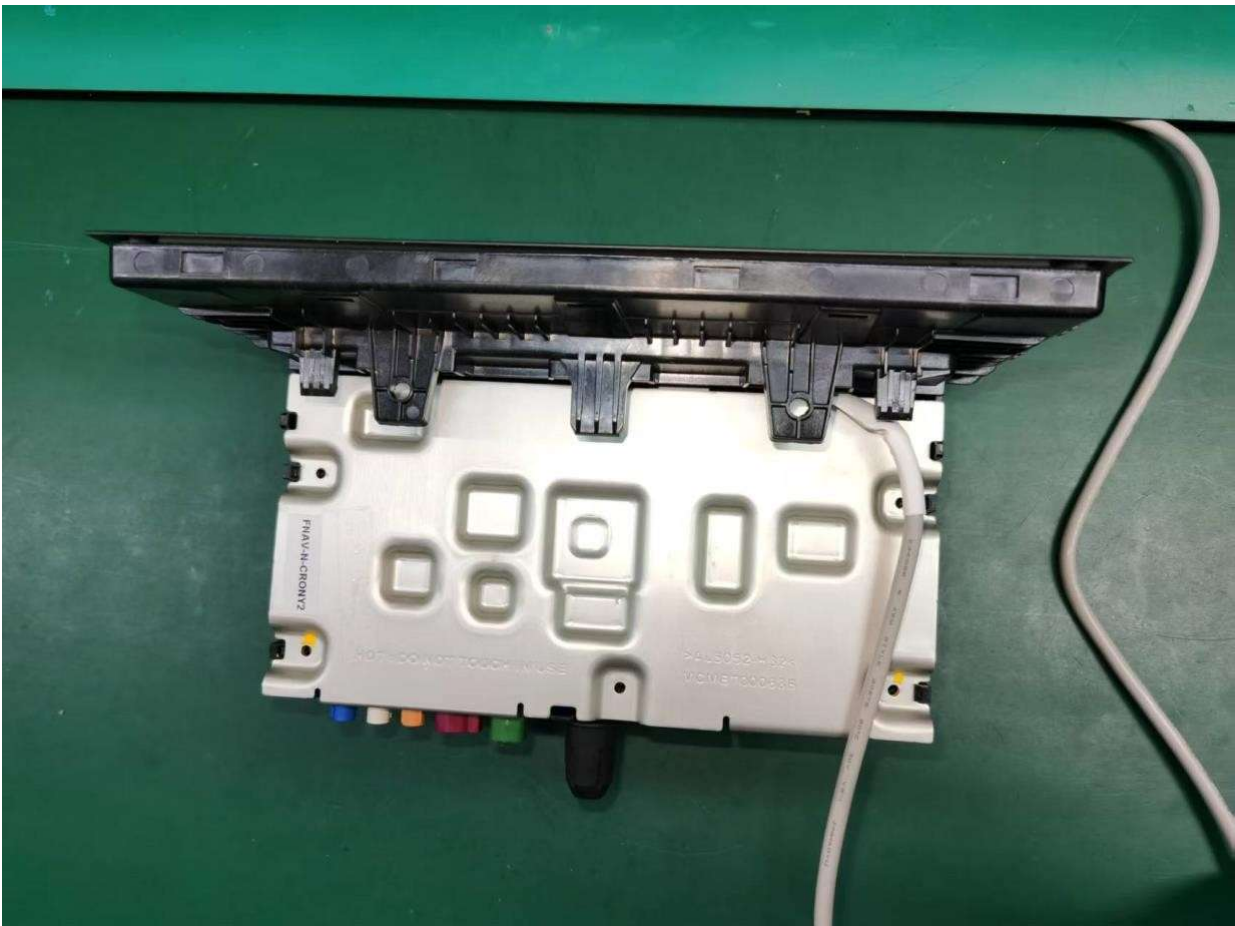
* Disconnect the ribbon cables from the green board and remove the board.



* Note the positions of the 4 copper columns and fix them, then install the interface small blue PCB and connect the ribbon cables.



* Install the ribbon cable and connect it to the green board as shown in the picture.

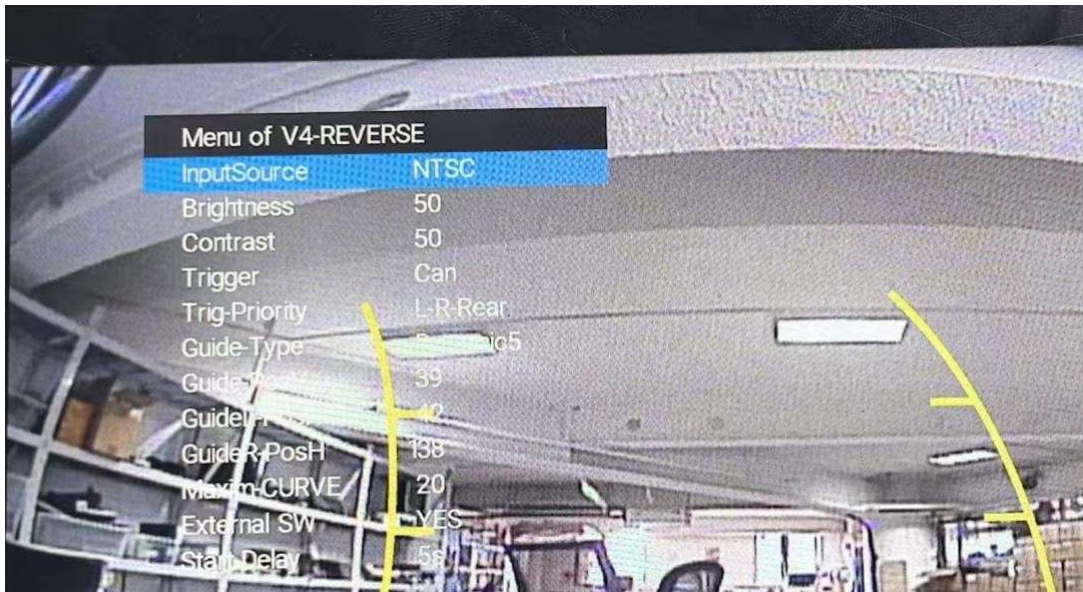


* After connecting the LVDS cable, please pay attention to the cable routing. Then put the metal cover and black plastic cover parts.

4.OSD Menu



The interface has three buttons, with those the installer can adjust picture display. The buttons are "menu", "up" and "down". The installer can press and select the video format, Brightness, Contrast, Position H, Position V etc. The first option shows the yellow RCA's current video format, it may be: CVBS(NTSC/PAL) AHD (720P25/720P30/960P30/1080P25/1080P30) (select from OSD menu)



External switch button:

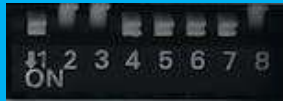
Short press: switch between original picture and front camera video (if enabled by DIP3).

Long press:

- OEM picture->
- V1 (if enabled by DIP1,) ->
- V2 (if enabled by DIP2,) ->
- V4 (if enabled by DIP4,) ->
- OEM picture

5.DIP-8 Settings

DIP UP=OFF DIP DOWN=ON			
DIP	ON	OFF	Default
1	V1 ON	V1 OFF	UP (OFF)
2	V2 ON	V2 OFF	DOWN (ON)
3	V3 ON (show Front camera 10s after reverse)	V3 OFF	DOWN (ON)
4	REAR CAM ON	V4 OFF	UP (OFF)
5	Must be OFF		UP (OFF)
6	Must be OFF		UP (OFF)
7	Must be OFF		UP (OFF)
8	Must be OFF		UP (OFF)



Dip-4 settings

DIP UP=OFF DIP DOWN=ON			
DIP	ON	OFF	Default
1/2/3/4	Must be OFF		UP(OFF)

